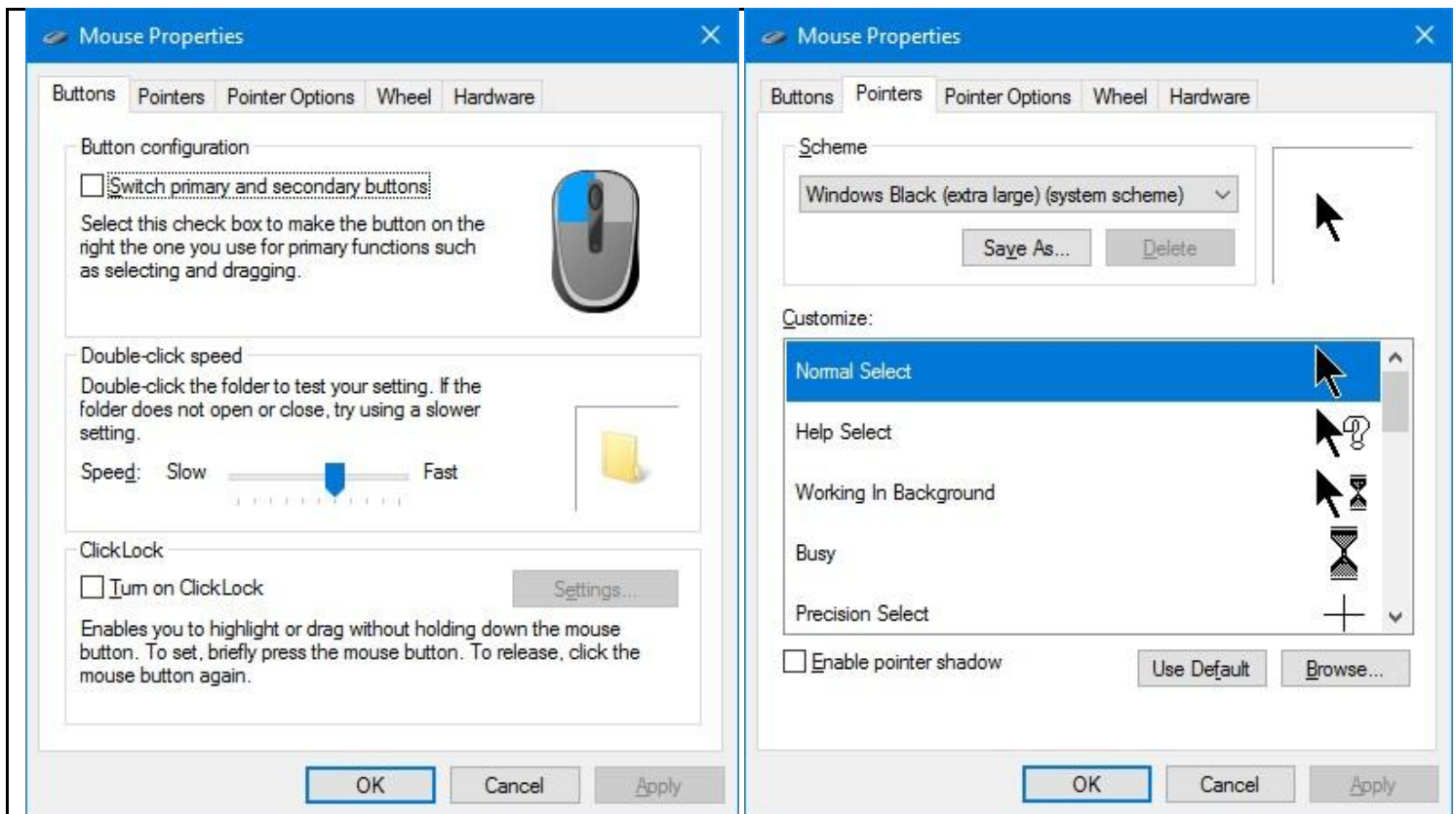


# Finding a Lost Cursor

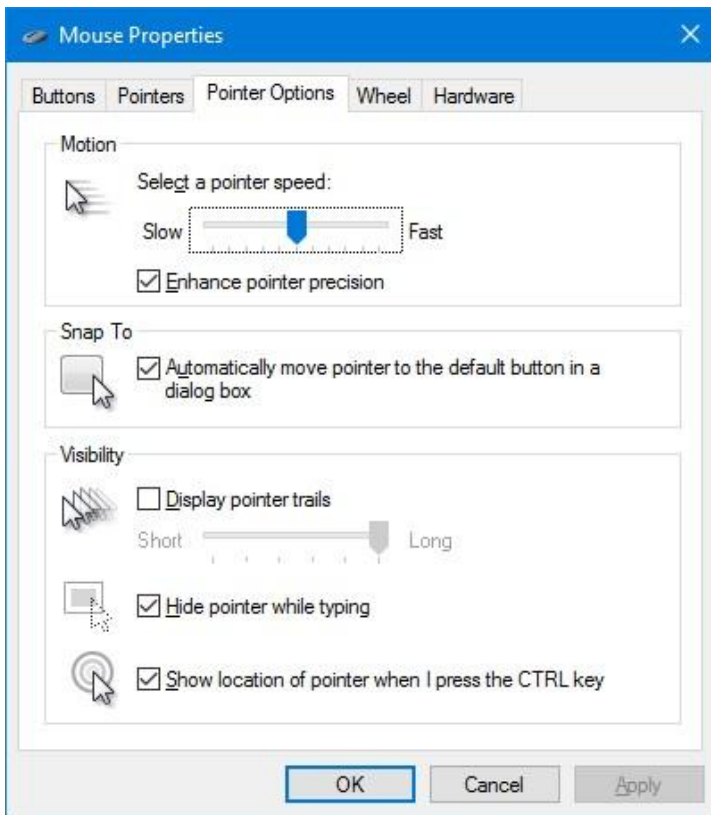
Did you ever bump your mouse and the cursor moved to a place where you couldn't find it? Follow these instructions to find your cursor (the mouse pointer).

1. Click on the "Start" button.
2. Click (right click for Windows 10) "Control Panel".
3. Click "Mouse" to display "Mouse Properties".



4. Click the "Pointers" Tab (the 2<sup>nd</sup> tab from the left).
5. Under "Scheme" click the drop-down menu:  
Select the line  
"Windows Black (extra large) (system scheme)"
4. Click "Apply"

5. Click on the "Pointer Options" Tab (the 3<sup>rd</sup> tab from the left).



6. At the bottom, click on the box marked:

"Show location of pointer when I press the CTRL key"

Test the cursor by pressing the CTRL key.

The circles indicate the mouse pointer location.

6. To finish, click the "OK" button